

PowerPoint® Plugin

PowerPoint is ideal for creating custom **Digital Signage** content when used with the DiscoverVideo PowerPoint plugin.

The DiscoverVideo PowerPoint Plugin makes it very easy to publish new video from PowerPoint, and to update/replace an existing PowerPoint video.

What It Does

The plugin automatically saves your presentation as a video, complete with animations, transitions, embedded audio and videos, and timings. It then automatically uploads your video to the system. If the video already exists, it allows you to replace it.

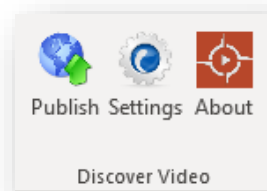
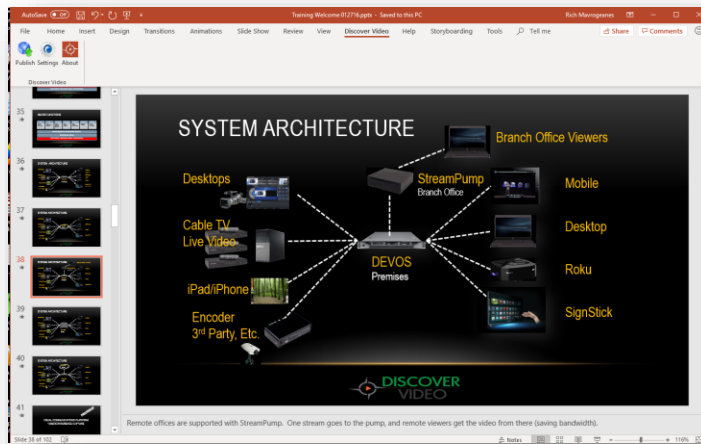
The replace function is key because you will not need to edit anything to display the new video. For example, if you have a video called "Today's Schedule", you can simply update your PowerPoint daily and be assured your edits will appear without further action.

How To Install

Install the DiscoverVideo PowerPoint plugin by running the installer program. Select "Next" and "Install" as prompted.

How To Use

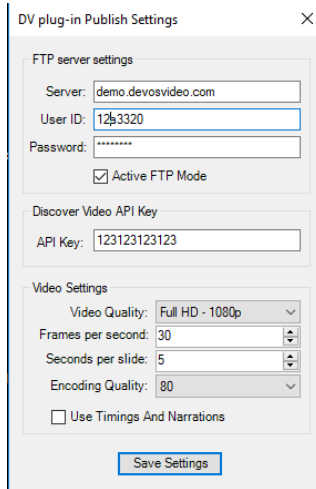
The DiscoverVideo Plugin appears in your PowerPoint toolbar. Simply select it to access the functions.



For first use, you must select "Settings". Values entered will be remembered by the system.

The "About" shows you the current version.

Settings



Enter the address of your Server, User ID, and Password. These FTP values can be obtained from your **system profile page** (User ID is your FTP Username not your DEVOS system login name).

You can force Active FTP Mode if your system requires it.

The API Key can be obtained from your system profile page. If you leave this blank the system can only upload new videos (the replace function will not operate).

Set quality, Frame Rate, Duration of each slide, and encoding quality.

If your PowerPoint already has timing saved, you can check "Use Timings and Narrations" to use them in the video, otherwise the duration of each slide will be the "Seconds per slide" value.

Publish

When you select Publish, the system will create and upload the video. The default title is the same as the PowerPoint filename, but you can change it when prompted. *Please use care to give your video a unique name so you can later easily identify it by title.*

If it is a new video, you will be prompted for optional metadata (description, author, channel, etc.).

If the title matches an existing video in the system, then you will be prompted to select the one you want to replace.

The system will create your video file and upload it. The time required to create the video depends on the number of slides, their complexity, the size and quality settings, and the CPU capacity of your computer. This is generally less than one minute.

Tips

- The DiscoverVideo PowerPoint plugin works with PowerPoint 2016 and above, including PowerPoint with "Office 365".
- Use your favorite PowerPoint template and layout.
- Avoid very small fonts. Remember, you are making a video to be displayed on TV screens where the maximum resolution is 1920 x 1080.
- You may insert a video into a slide and adjust it as desired. You may make the inserted video any size including full screen, put text and images around it, etc. You are limited only by your imagination and PowerPoint's capabilities.

- Select “Slide Show” and “Rehearse Timings” to record timing for each slide. If you have embedded a video, you’ll want that slide to appear long enough to play it. If you use global per-slide time, be sure it is long enough to play any embedded video.
- Use Animations for inserted text, images or other objects to give your display an exciting style.
- Use Transitions – either globally or set the transition for each slide differently. There are many to choose from.
- When replacing an existing video be careful to select the right one. If you select the wrong one you cannot recover the original.
- Use the DEVOS Mix Playlist to mix your PowerPoint video with live video and web pages.
- You can download any existing Google Slides presentation as a .pptx file and use it in PowerPoint.
- Use Digital Signage Schedule to show different content at different times of day.
- When we save the PowerPoint as video, the rendering time can be very long if there are large embedded videos. Keep any embedded videos as short as possible.
- You can elect to approve signage by simple reviewing PowerPoint files that are submitted to you through any means (One Drive, Dropbox, email, physical media). Review the PowerPoint and upload it only when you are satisfied.
- Be sure there is folder C:\DVideo on your computer. This folder is automatically created when you install Streamsie but may or may not be present when you install the PowerPoint Plugin. If it is not present, the program may crash.